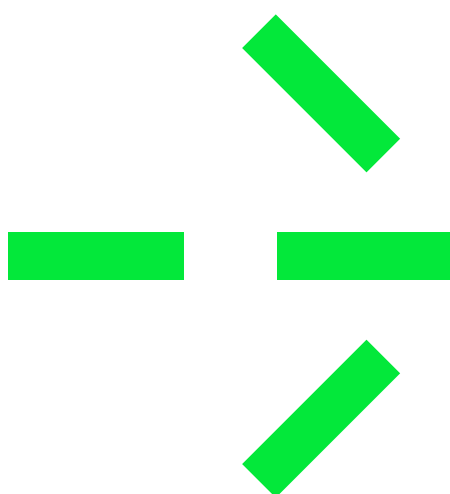
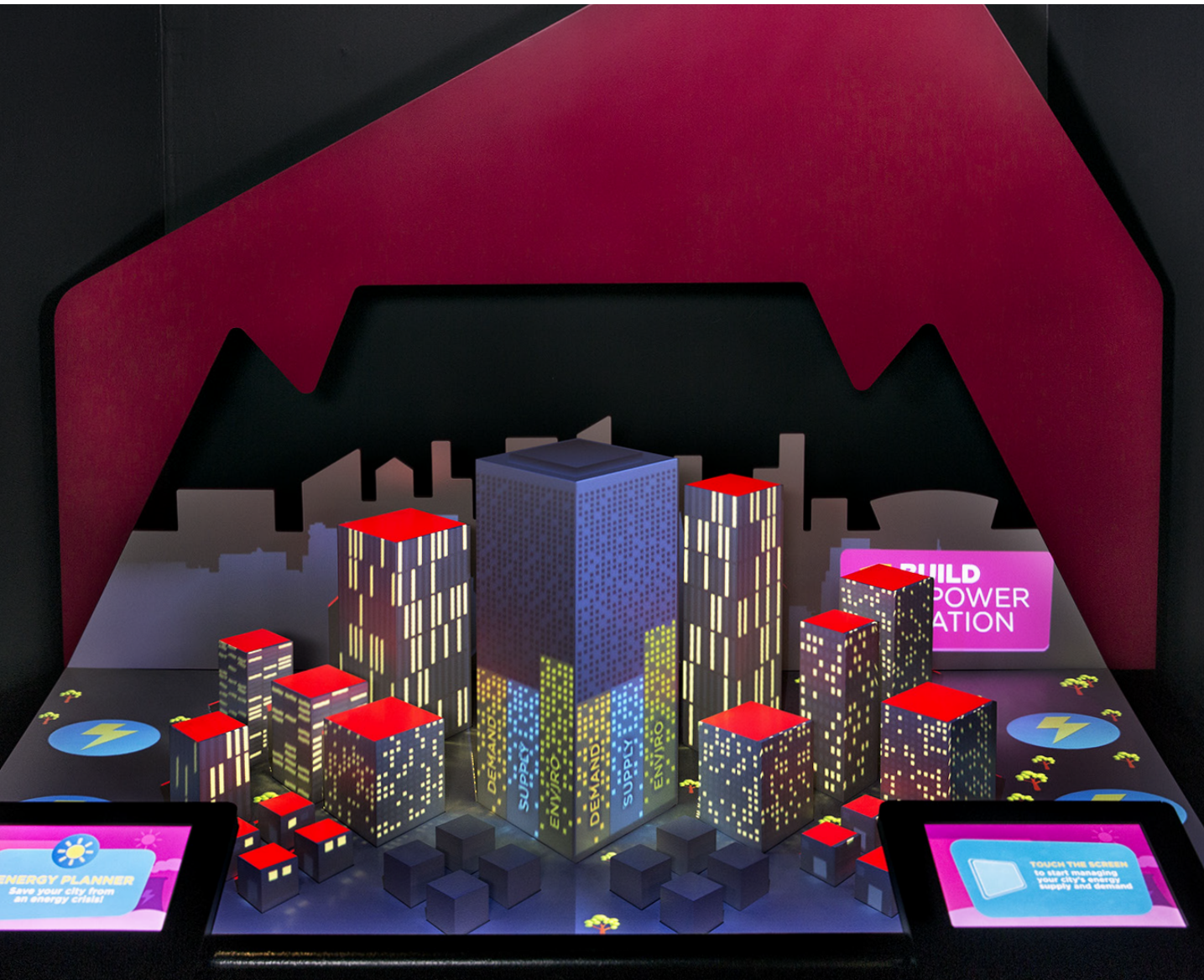


Interactive City Model

Fact Sheet



formula **D_**



Attract and engage visitors with an Interactive City Model

The **Interactive City Model** is an engaging learning experience that challenges visitors to make the best choices around power saving measures in their homes, energy-efficient city planning, and different aspects of power generation. The exhibit uses high definition projections and touchscreens for visitor input.

D_

Engage visitors with our 3D cityscape that reacts to their decisions and choices

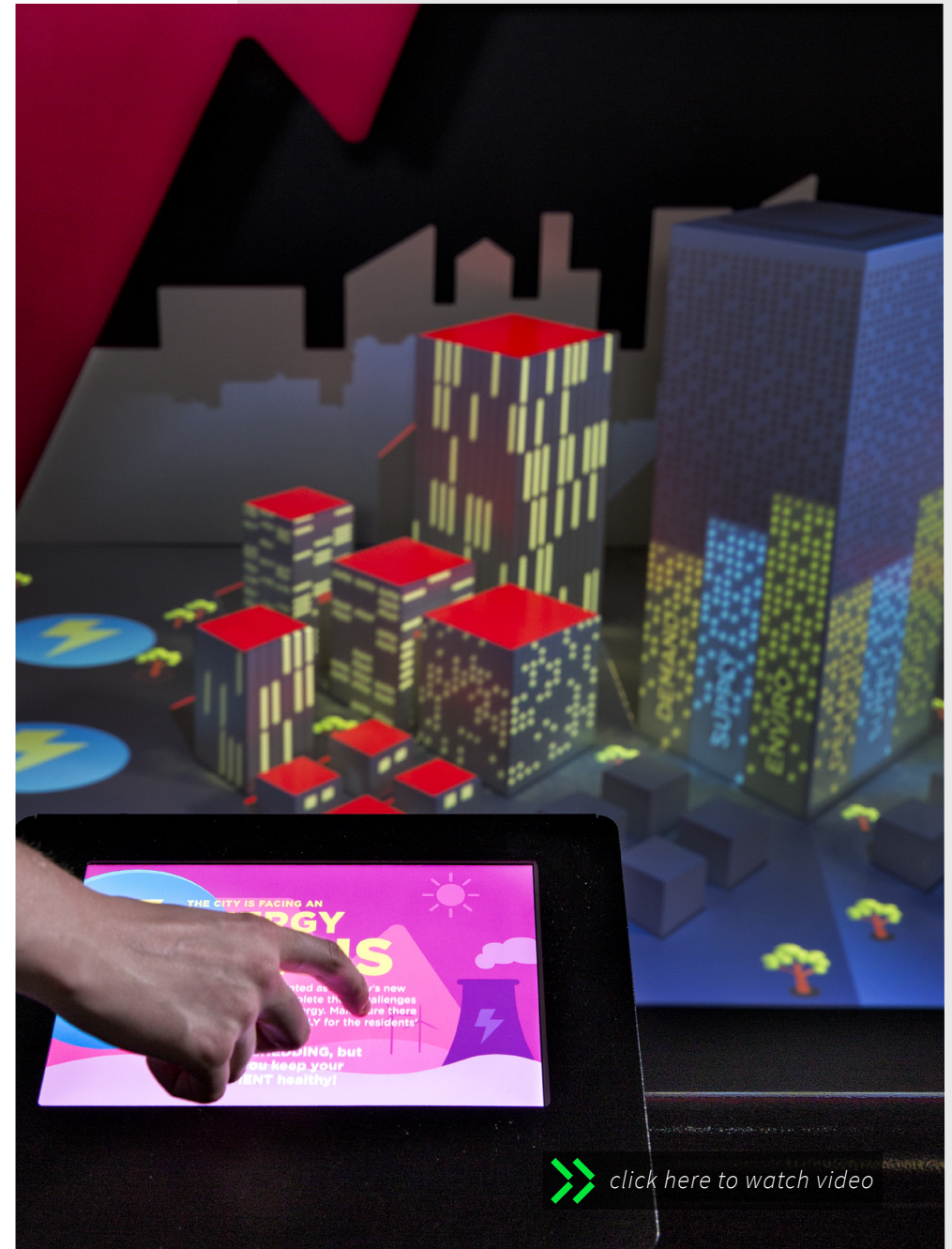
The exhibit draws attention as it transforms a simple painted wood model of a cityscape into a dynamically changing audiovisual presentation which visitors influence using touchscreens surrounding the model.

As visitors engage with a minigame challenge using the touchscreens, they are asked to make the right decisions to balance energy demand and supply of our model city while maintaining a good environmental footprint. This involves implementing power saving measures and selecting sustainable energy sources.

Choices immediately affect animations projected onto the cityscape providing feedback on the health status of the city's energy grid to players. The exhibit allows for the simultaneous engagement of multiple players or teams, each controlling specific areas of the city.

The interactive exhibit:

- Is designed for a multi-user, educational experience
- Provides information on different types of power generation
- Includes information on solar, wind, coal, hydroelectric and nuclear power
- Presents challenges to the visitor around choices on lighting, heating, cooking, etc.
- Asks the visitor to balance monetary and environmental effects
- Is designed for durability in high volume exhibition environments

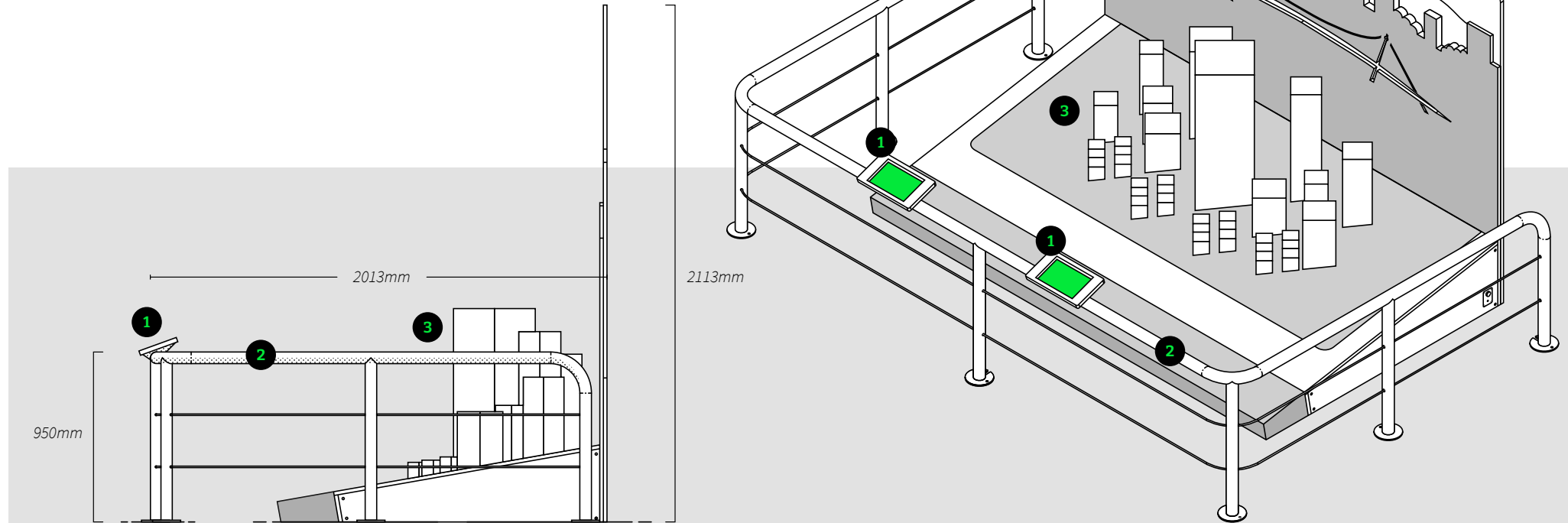


[click here to watch video](#)

D_

The Interactive Energy City Model

The **Energy City Model** with interactive projection mapping is controlled via two touchscreens. Materials include high quality painted timber and powder coated steel. The standard audio-visual system includes a high definition projector, two touchscreens and a central control unit.



01_ Touchscreens

03_ Interactive Cityscape

02_ Guard Rails

D_

A



B



They have the knack of taking **highly complex** concepts and issues and translating them into **simple, accessible and fun** games and exhibits.

Helen Lockhart

Communications & Sustainability Manager

Two Oceans Aquarium

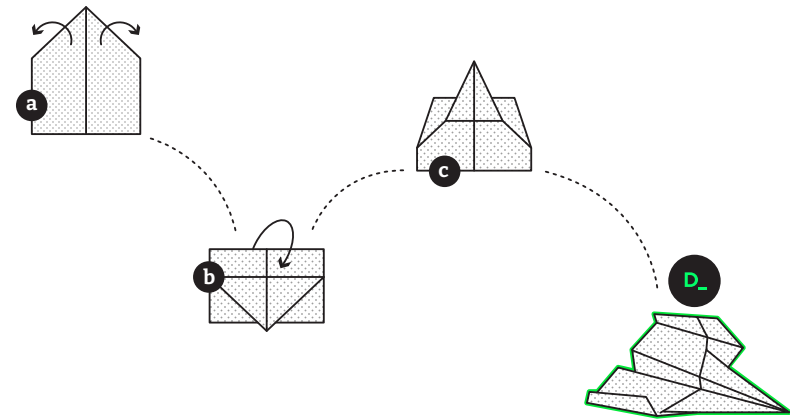
Interactive Energy City Model Details

Experience Details

+ Features	Hand activation mechanism, User interface design Registration dialogue and handprint customisation Visitor survey commitment dialogue Online reporting dashboard to review survey results
+ Learning Outcomes	probing visitor knowledge after experiential learning, data collection, Institution's understanding and quantification of impact on visitors.
+ Target and Age Group	12 years and older
+ Reading Level	12 years and older
+ Duration / Interaction	3 minutes per visitor
+ Application	Science and Visitor Ventres, Schools and education centers

Customisability

Content for the pledge wall can be customised/created to meet the required learning outcomes for your centre as well as meet the target audience at their competency level.



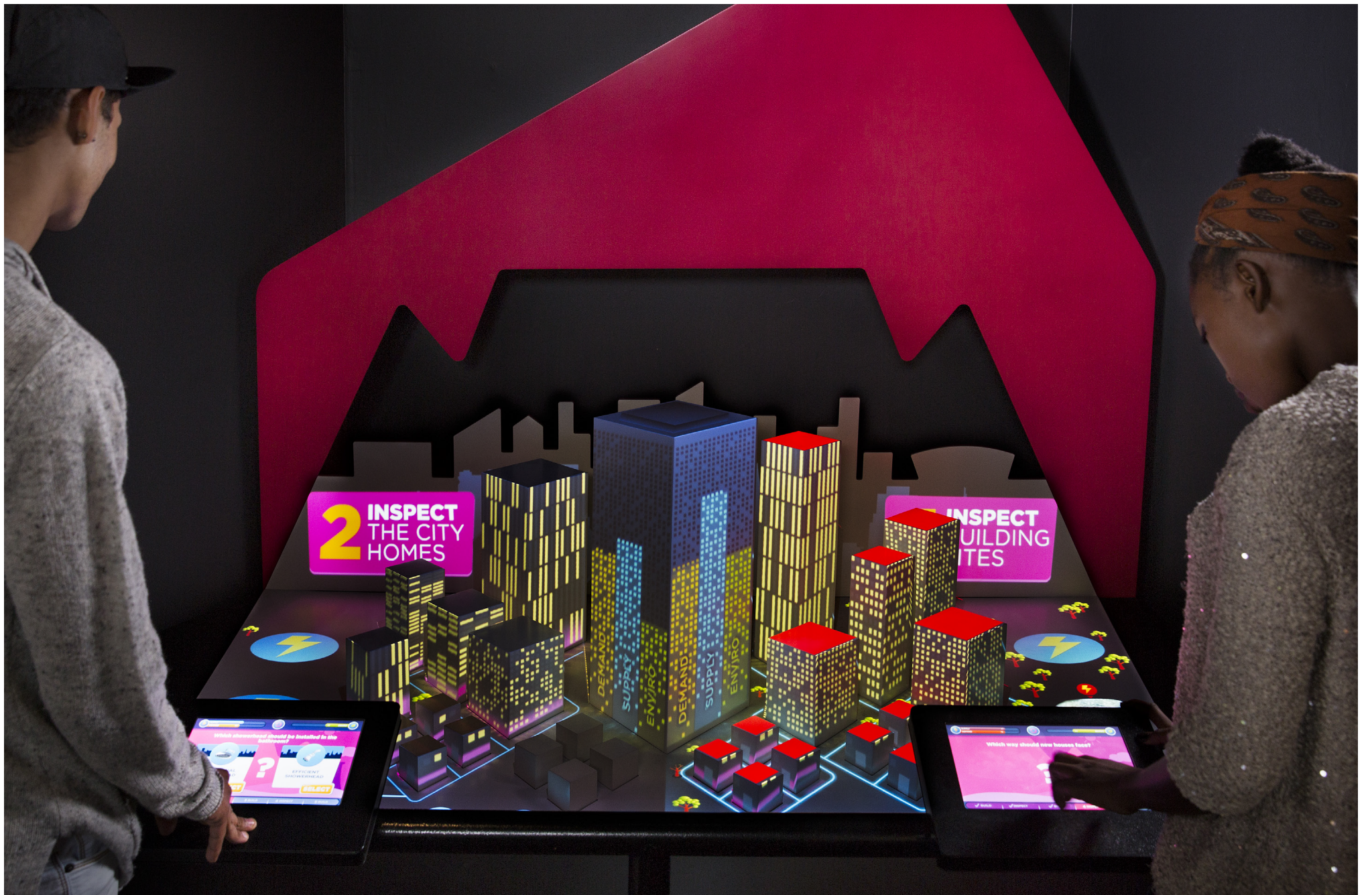
Standard Specifications

Physical Unit Contact us for more information on shipping weight and dimensions.

+ Exhibit Weight	115kg
+ Shipping Weight	180kg (shipped in parts)
+ Dimensions <small>Assembled (mm)</small>	3730 x 2013 (floor) x 2113mm(h) 3400mm Ceiling installation necessary
+ Shipping Dimensions	N/A Shipped in parts
+ Materials	Painted MDF, Epoxy Coated Galvanized Steel
+ Environment	Dry indoor space

Technology

+ Components	Full HD projector (4K upgrade available) 3x Tablet PC's, Power management system
+ Integrated PC System	Intel Core i5 processor, 256GB SSD 16GB RAM, Nvidia RTX dedicated GPU Microsoft Windows OS
+ Connectivity	Secure internal Wi-Fi system for peripheral control CAT6 wired connection to internet for remote access (site specific)
+ Power Requirements	40V / 110V AC outlet at floor and ceiling 220v / 110v AC input w. on board power management



formula **D_**



Contact

Unit 407, Woodstock Exchange,
66 Albert Road, Woodstock,
Cape Town, 7975

Phone: +27 (0) 21 461 7381

E-mail: info@formula-d.com

www.formula-d.com

