

# Interactive **Living Planet**

Fact Sheet



formula **D\_**



## Attract and engage visitors on our multi-touch tables

To immerse visitors in the fascinating aspects of the natural environment of our planet as well as educate them on how they can positively affect it, **formula D\_** interactive created the **Living Planet** interactive table and screen application.





## Excite and engage users with a Living Planet - Learning Application

To provide an interactive experience that educates visitors on both natural and man-made phenomena that affects our planet, as well as how we can live more harmoniously on it, our museum exhibition design team created the **Living Planet** interactive table and screen application.

The **Living Planet** application gives visitors a 3D interactive Earth with touch points all over the globe. Visitors can rotate the digital globe and select touch points that catch their attention, opening up information on topics ranging from El Nino to Urbanisation. The application also includes animations depicting the earth's carbon cycle as well as an internal view of the planet showing the layers from outer crust to inner core. A time-lapse sequence display on how the continents have formed, changed and shifted over the millennia.

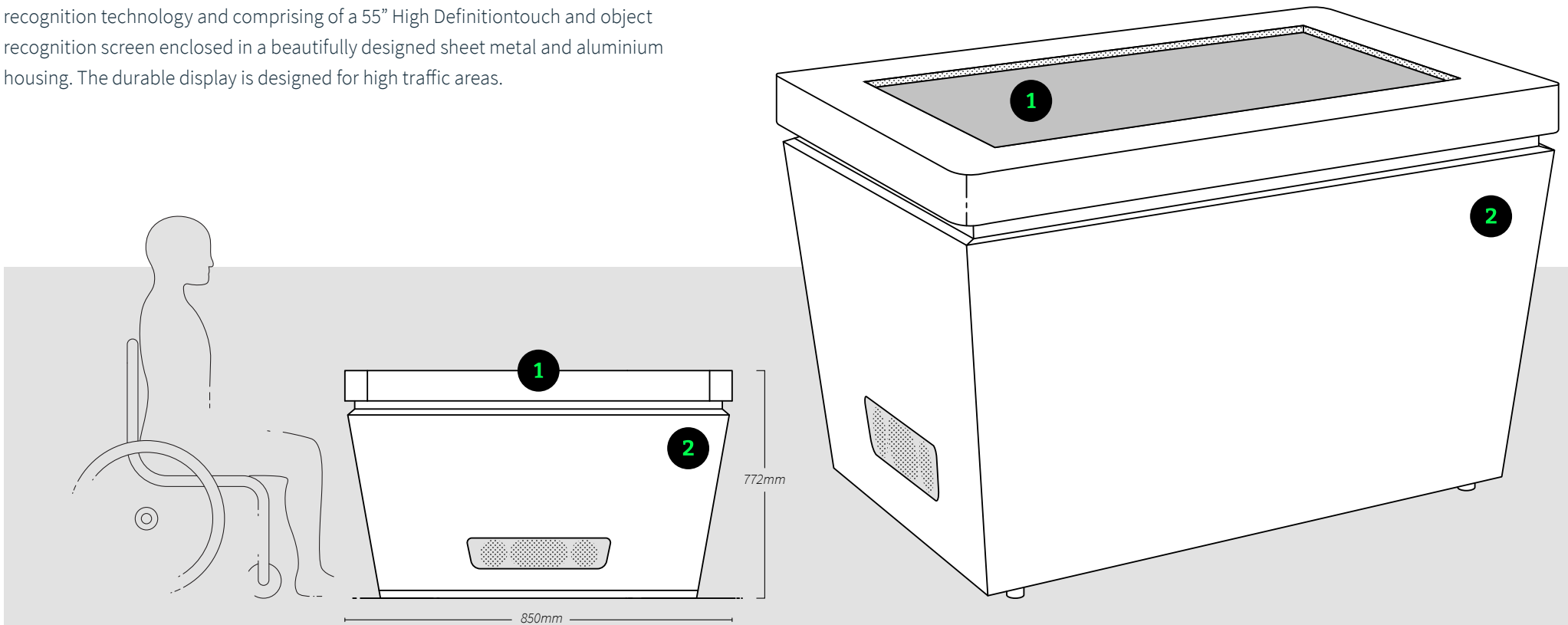
### Application Information:

- Size 150mb
- Category Educational
- Compatibility Windows 10 OS
- Languages English
- Recommended Age 7+

We provide warranty and maintenance options to all our clients and partners. Enquire now to find out more.

# The Multitouch Table

The biggest platform is a turnkey-solution sophisticated Reactivision pattern recognition technology and comprising of a 55" High Definition touch and object recognition screen enclosed in a beautifully designed sheet metal and aluminium housing. The durable display is designed for high traffic areas.



01\_ 55" HD Touchscreen

02\_ Aluminium Housing



D\_



**formula D\_'s Red Dot Award**  
is another proof that we not only match  
international standards, we often  
**exceed them.**

Prof. Peter Zec  
*Founder of Red Dot*

# Exhibit Experience Details

## Experience Details

+ Inclusive Design	Wheel chair friendly
+ Learning Outcomes	Defined by custom application made to your requirements
+ Target and Age Group	12 years and older
+ Reading Level	12 years and older
+ Duration / Interaction	About 3 minutes per visitor
+ Application	Science and visitor centres, Schools and education centres
+ Languages	English Custom language at additional cost

## Customisability

Module content for Living Planet can be customised and created to meet the required learning outcomes for your needs as well as meet the target audience at their competency level.



# Standard Specifications

## Physical Unit Contact us for more information on shipping weight and dimensions.

+ Exhibit Weight	129kg
+ Shipping Weight	195kg
+ Dimensions <small>Assembled (mm)</small>	L 1311 x W 850 x H 772
+ Enviroment	Dry Indoor Space
+ Materials	Epoxy Coated Galvanised Steel, 6mm Tempered Glass, Plexiglass

## Technology The unit is shipped with a control monitor built into the cabinet.

+ Components	55 inch LED Touch and Object Recognition Screen Automatic key switch system, 2.1 Sound system
+ Integrated PC System	Intel Core Processor, Integrated Graphics, Microsoft Operating System
+ Power	WiFi 240 V AC 60Hz
+ Power	LAN 120V AC 50Hz





# formula **D\_**



## **Contact**

Unit 407, Woodstock Exchange,  
66 Albert Road, Woodstock,  
Cape Town, 7975

**Phone:** +27 (0) 21 461 7381

**E-mail:** [info@formula-d.com](mailto:info@formula-d.com)

[www.formula-d.com](http://www.formula-d.com)

