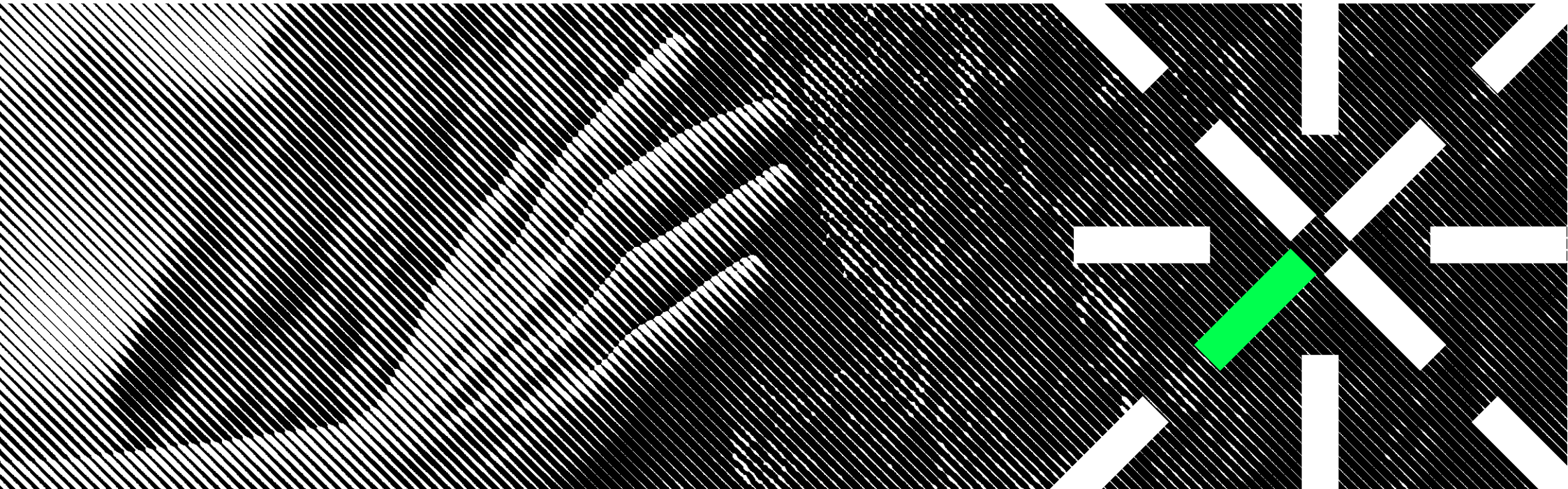


Interactive Green Team Game

Fact Sheet



formula **D_**



Attract visitors with a Green Team game - learning application

The **Green Team Game** is a multitouch interactive table game designed to teach players about food, water, waste and energy, an application that compliments the learning outcomes of the **Living Planet** application in teaching conservation of the Earth and all the organisms that live on it.



Excite and engage users on our multi-touch tables

The **multi-touch table** can be used by up to four players simultaneously and there are four different characters for the player to interact with.

Each character represents an aspect of the environment: water, energy, food and waste. The animated characters (a mudskipper, firefly, cane rat and dung beetle) each present the player with different illustrated scenes and scenarios related to the aspect that that character represents.

As players answer questions and solve scenarios, they earn Earth Tokens. At the end of the 4 scenarios, the players Earth Tokens travel to the animated Earth that lives in the centre of the multitouch table surface. She smiles and laughs as she absorbs them, making her happier and healthier.

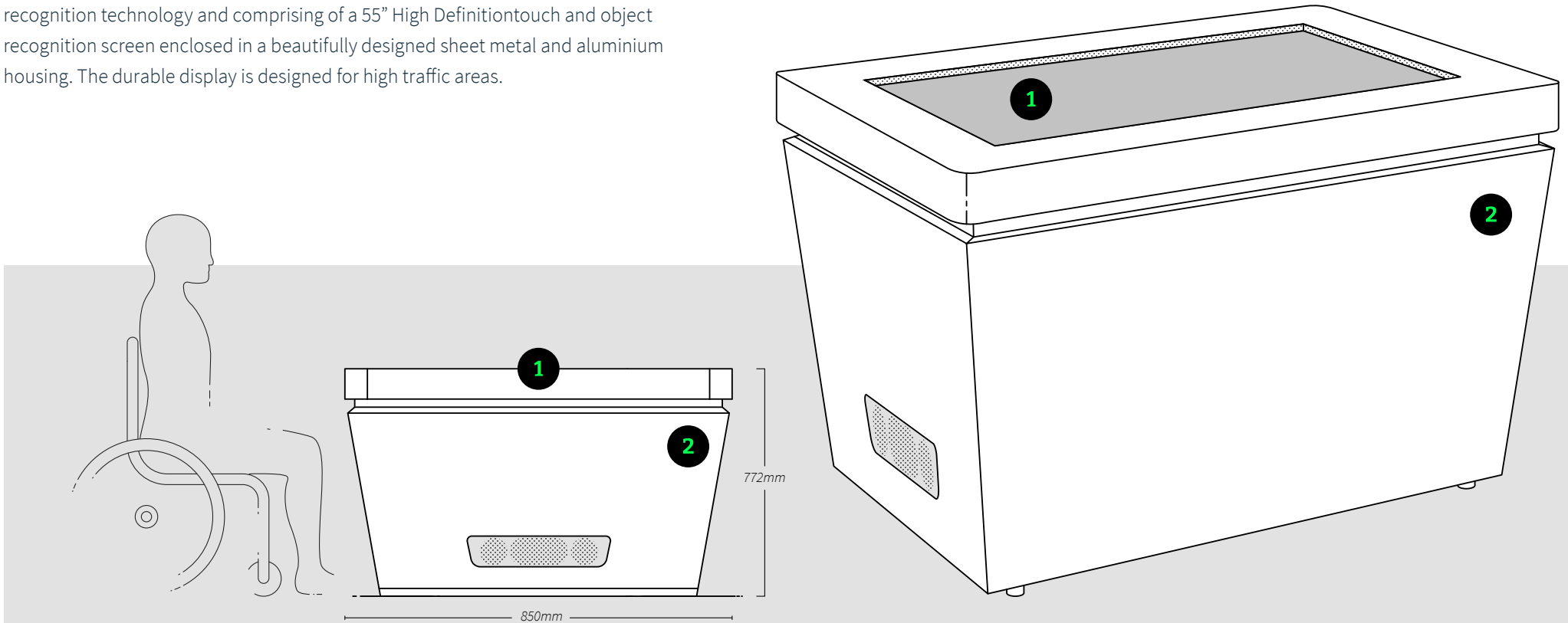
Application Information:

- Size: 150mb
- Category: Educational
- Compatability: Windows 10 OS
- Languages: English
- Recommended Age: 7+

We provide warranty and maintenance options to all our clients and partners. Enquire now to find out more.

The Multitouch Table

The biggest platform is a turnkey-solution sophisticated Reactivision pattern recognition technology and comprising of a 55" High Definition touch and object recognition screen enclosed in a beautifully designed sheet metal and aluminium housing. The durable display is designed for high traffic areas.



01_ 55" HD Touchscreen

02_ Aluminium Housing



The open communication on the project was very valuable as we neared final reviews during production and coordinated shipping/travel. Every member of the team was incredibly helpful and enjoyable to work with (from afar). We wish we could have visited and had more opportunities to meet in person throughout the design process, but maybe next time!

Emily Goldenberg
MASS Design Group

Exhibit Experience Details

Experience Details

+ Inclusive Design	Wheel chair friendly
+ Learning Outcomes	Defined by custom application made to your requirements
+ Target and Age Group	12 years and older
+ Reading Level	12 years and older
+ Duration / Interaction	About 3 minutes per visitor
+ Application	Science and visitor centres, Schools and education centres
+ Languages	English Custom language at additional cost

Customisability

Module content for Green Team can be customised and created to meet the required learning outcomes for your needs as well as meet the target audience at their competency level.

Standard Specifications

Physical Unit Contact us for more information on shipping weight and dimensions.

+ Exhibit Weight	129kg
+ Shipping Weight	195kg
+ Dimensions <small>Assembled (mm)</small>	L 1311 x W 850 x H 772
+ Enviroment	Dry Indoor Space
+ Materials	Epoxy Coated Galvanised Steel, 6mm Tempered Glass, Plexiglass

Technology The unit is shipped with a control monitor built into the cabinet.

+ Components	55 inch LED Touch and Object Recognition Screen Automatic key switch system, 2.1 Sound system
+ Integrated PC System	Intel Core Processor, Integrated Graphics, Microsoft Operating System
+ Power	WiFi 240 V AC 60Hz
+ Power	LAN 120V AC 50Hz



formula **D_**



Contact

Unit 407, Woodstock Exchange,
66 Albert Road, Woodstock,
Cape Town, 7975

Phone: +27 (0) 21 461 7381

E-mail: info@formula-d.com

www.formula-d.com

